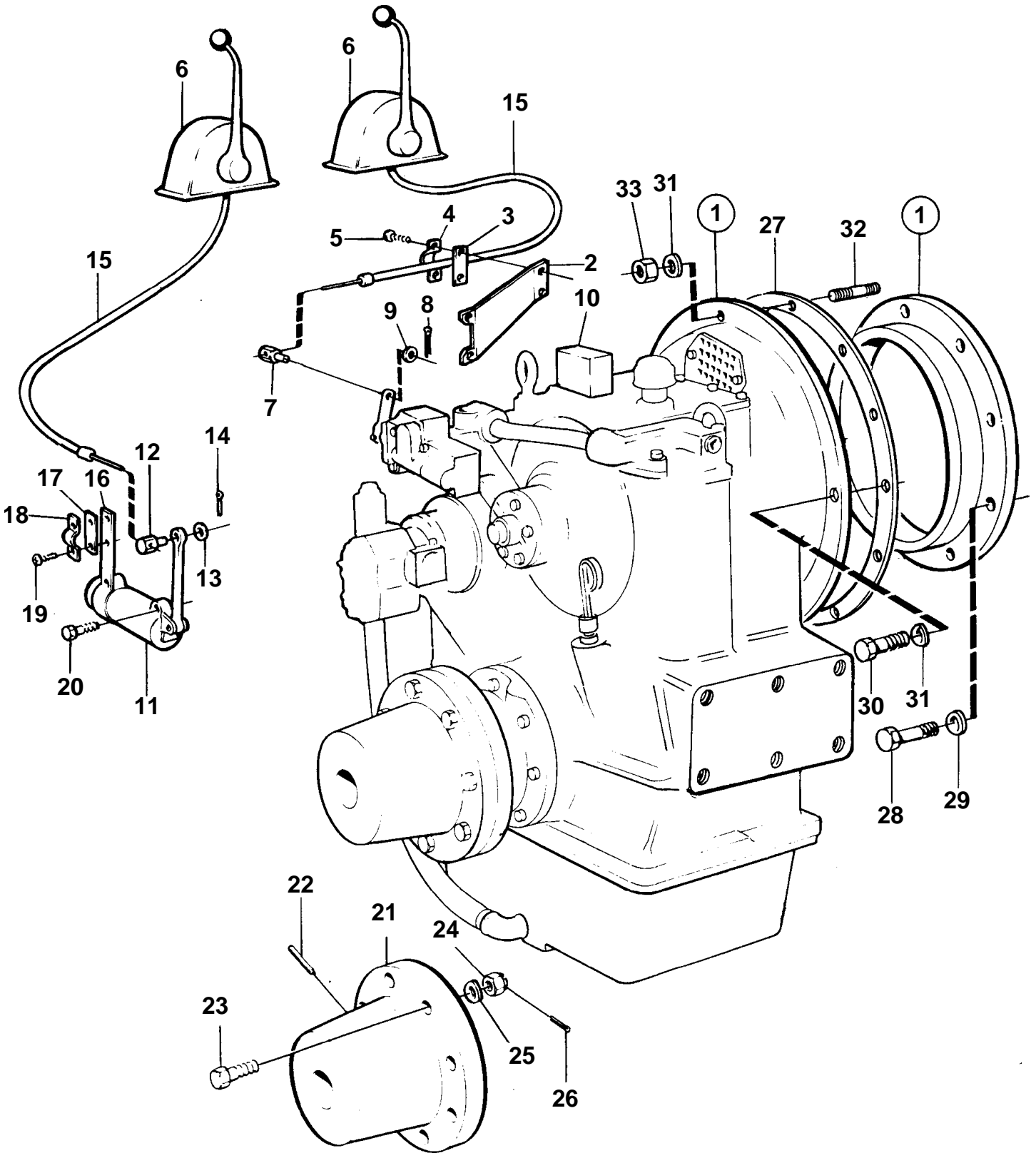


TMD122A, TAMD122A



16076

TMD122A, TAMD122A

REF	PART NO.	QTY	DESCRIPTION	SEE SEC.	NOTES
1		1	Reversing gear		RATIO 1.51:1, 2.00:1 3.00:1, 3.50:1, 4.13:1 4.50:1, 5.16:1, 6.00:1
			Comps. not spec.		
2	836117	1	Bracket		
3	819068	1	Washer		
4	819067	1	Brace		For control cable 333, 33c.
	6853782	1	Clamp		For control cable 443, 43c.
5	950021	2	Screw		
6		X	Control		SEE GROUP 27
7	853217	1	Cube		
8	907824	1	Cotter pin		
9	940191	1	Washer		
10			Oil pressure sensor	2331	
11	846862	1	Slip valve		
12	853217	1	Cube		
13	940191	1	Washer		
14	17276	1	Cotter pin		
15		X	Control cable		SEE GROUP 27
16		1	Bracket		
17	819068	1	Washer		
18	819067	1	Brace		
	6853782	1	Clamp		
19	950021	2	Screw		
20	955528	2	Screw		
21	837093	1	Companion flange	SO	
22		2	Pin		
23	955773	8	Screw		L=76mm, FOR 955889
	955774	8	Screw		L=83mm, FOR 950381
24	955889	8	Castle nut		EARLY TYPE
	950381	8	Lock nut	SO	LATE TYPE
25	941917	8	Spring washer		LATE TYPE
26	907881	8	Cotter pin		EARLY TYPE
27	862661	1	Gasket		
28	955561	8	Screw		SN-1101050532/XXXXXX
	955560	8	Screw		SN1101050533/XXXXXX-
29	940280	8	Spring washer		
30	940134	10	Screw		
31	941909	12	Spring washer		
32	953290	2	Stud		
33	940157	2	Nut		